



THE LEADER IN ULTRASOUND TRAINING MODELS



OVER 150 DIFFERENT ULTRASOUND TRAINING MODELS AVAILABLE AT WWW.BLUEPHANTOM.COM





THE MOST **REALISTIC, ULTRA-DURABLE** ULTRASOUND TRAINING MODELS AVAILABLE **ANYWHERE**

REALISTIC

Images like a real patient, providing you with the most realistic training environment

ULTRA-DURABLE

Get over 1,000 uses saving you time and money

ULTRASOUNDABLE

Use with any ultrasound system – no computer simulation or software necessary

We have been using the Blue Phantom central venous access head, neck and upper torso model for well over a year and “have achieved outstanding results.... Our particular phantom has been cannulated over 500 times and shows no sign of wear.... I have used several different products and am convinced that the Blue Phantom is the best available on the market.”

Christopher C. Raio, North Shore University Hospital, NY





SPINAL EPIDURAL AND LUMBAR PUNCTURE MODEL



- Extremely versatile: perform a wide variety of procedures including lumbar puncture, lumbar epidural, thoracic epidural and cervical epidural procedures
- Inject anesthetics, introduce needles, thread catheters and obtain manometer measurements for comprehensive procedural training
- Superb for ultrasound training and blind insertion technique

What you'll see

Optional obese
spinal tissue
insert module
available



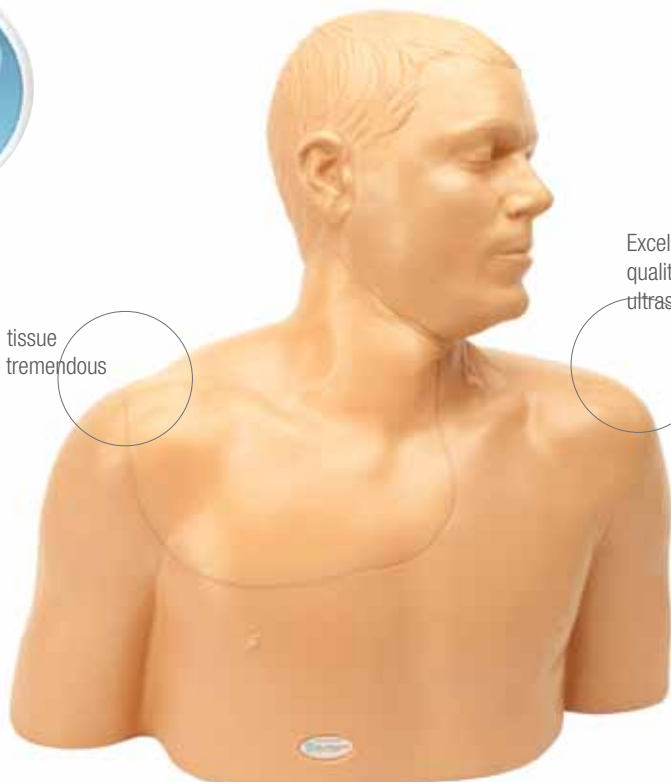
Experience the same
realistic tissue response
as you would from a
live patient

LUMBAR PUNCTURE



Self-healing tissue offers users tremendous durability

Excellent imaging quality using any ultrasound system

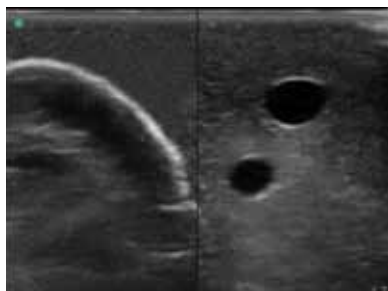
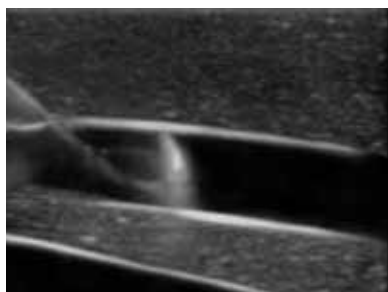


GEN II ULTRASOUND CENTRAL LINE TRAINING MODEL

ALSO AVAILABLE WITH BRACHIAL PLEXUS OPTION FOR REGIONAL ANESTHESIA TRAINING

- Superb realism optimizes your training: Extremely realistic and durable central venous access training model. Excellent for ultrasound guided or blind insertion technique training
- The most realistic and durable central venous access available anywhere; excellent for internal jugular, subclavian and axillary vessel full procedural training
- Extremely durable, self-sealing tissue saves you money

What you'll see



CENTRAL LINE



RENAL BIOPSY ULTRASOUND TRAINING MODEL



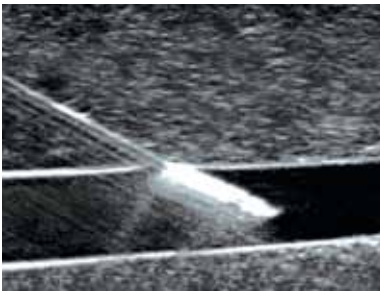
- Excellent for gaining proficiency in ultrasound guided renal core biopsy or needle aspiration procedures
- Gain imaging and procedural proficiencies utilizing this extremely realistic training platform
- Images and feels like real human tissue

What you'll see

Expect the same
imaging quality as you
would from a live patient

Allows for repeated
needle biopsies using
core needle biopsy
or needle aspiration
techniques

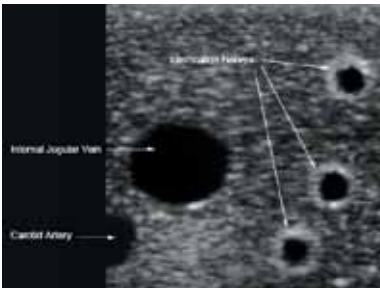




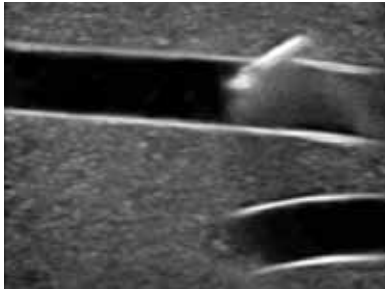
CENTRAL VENOUS ACCESS ULTRASOUND TRAINING MODEL

ALSO AVAILABLE WITH BRACHIAL PLEXUS OPTION FOR REGIONAL ANESTHESIA TRAINING

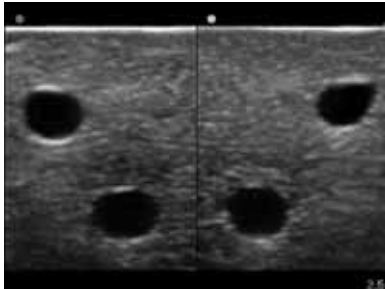
- Images like a real patient providing the most realistic training environment
- Use ultrasound guidance to cannulate and thread guidewires, dilators and catheters
- Self healing tissue withstands tremendous use, dramatically reducing necessity for replacement parts



What you'll see



VASCULAR ACCESS ARM ULTRASOUND MODEL

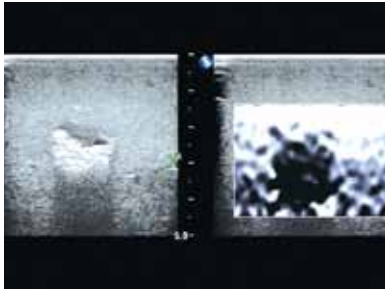
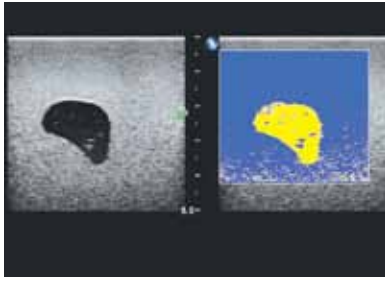


- Extremely realistic procedural training model for ultrasound guided arterial lines, peripheral IVs, and PICC lines
- Optimize your training by using tissue that matches the ultrasound imaging qualities as human tissue
- Cost effective training: Use your own ultrasound system for simulation training

What you'll see

Use your own ultrasound system for simulation training

High quality training platform offers the lowest cost of ownership



ELASTOGRAPHY BREAST BIOPSY ULTRASOUND TRAINING MODEL

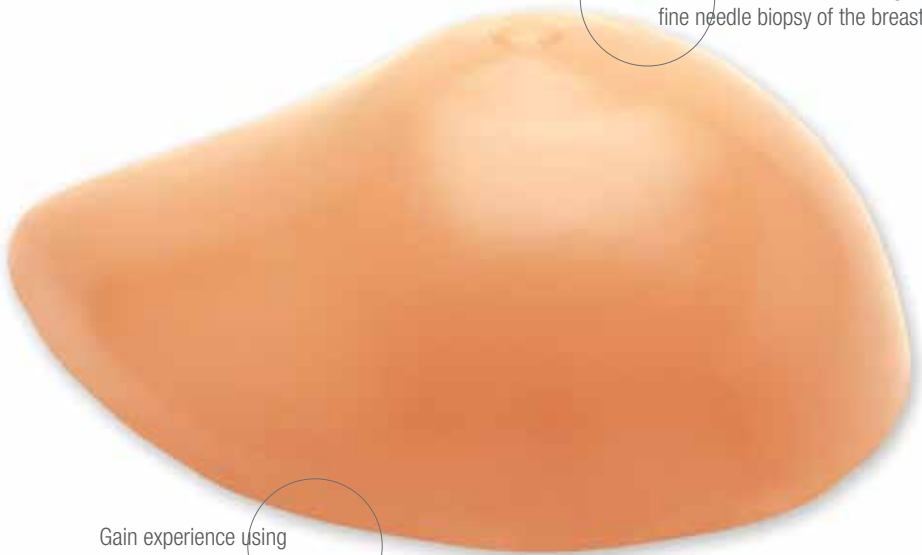


- Contains range of stiff, soft and isoelastic lesions all in the same model
- Extremely realistic and durable for repeated use
- No special storage required; models will not decompose or dehydrate saving you money

What you'll see

Develop hand-eye coordination associated with ultrasound-guided fine needle biopsy of the breast

Gain experience using stiff, soft, as well as isoelastic lesions



ELASTOGRAPHY

Extremely realistic
imaging
characteristics,
mimicking the
transvaginal
scanning experience



Brand
New!

Anatomically correct
interior and exterior
anatomy



What you'll see

COMBINATION IUP/ECTOPIC TRANSVAGINAL MODEL

- Train where you want, when you want, without risks associated with using live patients
- Develop necessary hand-eye coordination skills on realistic ultrasound phantom models. Four other anatomical configurations available
- Practice on a realistic simulation model before performing transvaginal procedures on live patients

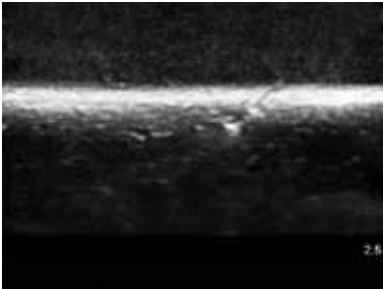
**“All I can say is WOW!
The endovaginal ultrasound
phantom is beautiful, everything
I expected and more!...The
structures are very life-like and
true to form, it's amazing!”**

Joyce A. Grube, MS, RDMS, Program Director and Associate
Professor, Medical Sonography, Kettering College of Medical Arts





BONE FRACTURE ULTRASOUND TRAINING BLOCK MODEL



- Available in green stick or crepitus fracture configurations
- Develop and practice the psycho-motor skills necessary to gain proficiency in using ultrasound
- Learn to identify bone fractures using ultrasound

What you'll see

Optimize your training; extremely realistic anatomy

High durability ensures low cost of ownership

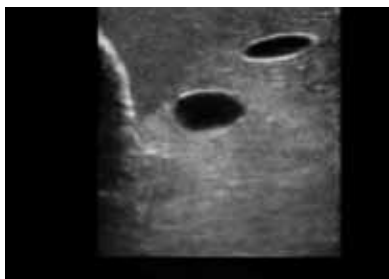


BONE FRACTURE



Realistic anatomy optimizes your training; contains realistic internal anatomy and external landmarks

Self-healing and ultra-durable tissue offers tremendous use



INTERNAL JUGULAR CENTRAL LINE TRAINING MODEL

ALSO AVAILABLE IN TRANSPARENT TISSUE



- The most realistic and durable low cost-per-use central line simulator available anywhere
- Realistic anatomy optimizes your training; contains realistic internal anatomy and external landmarks
- Users can simulate arterial pulsation manually via the included hand bulb

What you'll see



FAST TRAUMA REAL TIME

- Fully imageable upper and lower torso for real-time FAST and TTE training
- Realistic imaging using any ultrasound system – no computer simulation or software needed



What you'll see

FAST—TRAUMA

THE ULTRASOUND TRAINING MODEL

- Accurately mimics imaging characteristics of human tissue; providing you with the most realistic ultrasound training model available anywhere





MIDSCAPULAR THORACENTESIS ULTRASOUND TRAINING MODEL



- Extremely realistic and durable; offering superb training with low cost of ownership
- Develop and practice skills associated with midscapular approach to ultrasound guided thoracentesis procedure
- Contains lung, pleural effusion, diaphragm, spleen, ribs, and more

What you'll see



Gain experience and confidence identifying and guiding needle and small gauge catheter insertions in patients with pleural effusions

Superb training with a low cost of ownership

THORACENTESIS

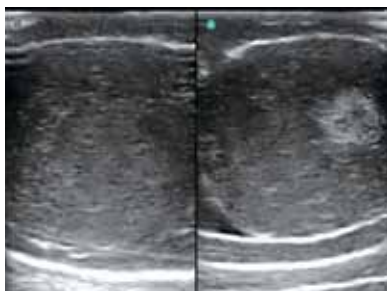
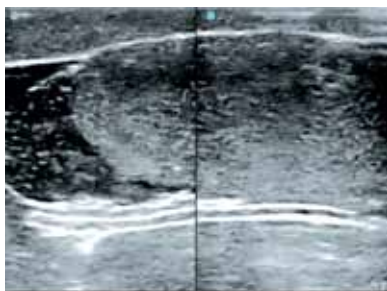
Develop, practice and verify user's
scrotal ultrasound imaging skills

Practice on an extremely realistic
simulation model before practicing
on live patients

Brand
New!

SCROTAL ULTRASOUND TRAINING MODEL

- Mimics the feel and imaging characteristics of an actual scrotal exam
- Identify normal and pathological testicular and intrascrotal structures
- Gain proficiency in performing scrotal ultrasonography where you want, when you want without the risk and inconvenience of using live models



What you'll see

SCROTAL



CAE Healthcare

6300 Edgelake Drive
Sarasota, FL 34240



**THE MOST REALISTIC, ULTRA-DURABLE
ULTRASOUND TRAINING MODELS AVAILABLE ANYWHERE**

Please visit our **NEW** website www.bluephantom.com for a complete line of products, movies, training, and more.